



# Pharmacists Without Borders Switzerland

Annual report 2021  
A transitional year



# Pharmacists Without Borders Switzerland

Annual report 2021





## A word from the Committee

Dear Members, Partners and Friends from PSF Switzerland,  
What conclusions can we draw from 2021 after the shock provoked by the Covid-19 pandemic in 2020 ?

Three words alone sum up an entire year that was also shaken by the sanitary crisis.

One of the first words that comes to mind is the **difficulty** associated with the closure of borders in Madagascar and also the difficulties that arose from the precarious health situation in Tanzania, which forced PSF Switzerland to renounce the deployment of volunteer pharmacists in the field, who are usually present on site to support local health professionals and beneficiary populations. The follow-up had to be done remotely, with the frustrations and problems associated with teleworking, but with the concern of guaranteeing a permanent exchange.

Secondly, a **certainty**, exposed by the absence of volunteer pharmacists in the field, which revealed the accuracy of the strategy of PSF Switzerland when it comes to the local empowerment of its partners to carry out its projects. The training provided and the support given to health staff by our volunteers has ensured that the overall management and dispensing of a medication of quality has been successful throughout 2021.

Finally, Covid-19 created an **opportunity**, which led PSF Switzerland to reinvent itself and to develop basic training and online prevention tools in order to adapt to the pandemic new constraints.

This e-learning axis, based on training modules, is made up of videos, PowerPoint presentations and evaluation quizzes. Topics include the different types of medicines, doses and dosages and good pharmaceutical practice. The training is interactive and accessible to as many people as possible ! The year 2021 thus presents a mixed picture, but overall, it has been a year of transition full of promises and new opportunities for 2022.

Happy reading to all !

Associatively yours,

The Committee of PSF Switzerland



*The members of the Committee (from left to right and from top to bottom) - Marie-Carmen Josefowski-Paccaud, Christophe Berger, Elodie Barbay, Marie-José Barbalat, Sandrine Von Grünigen, Stéphanie Martin, Christie, Sandra Girardet, Stéphanie Mena, Klara Hess*

Pharmacists Without Borders Switzerland (PSF Switzerland) is a non-profit association under Swiss law founded in 1992 in Geneva.

## The Vision of PSF Switzerland

Ensure access to health care for everyone everywhere, without discrimination of any kind.

## The Mission of PSF Switzerland

To improve access to quality medicines for the most vulnerable populations, to exchange knowledge and to promote the rational use of medicines in the interest of public health.

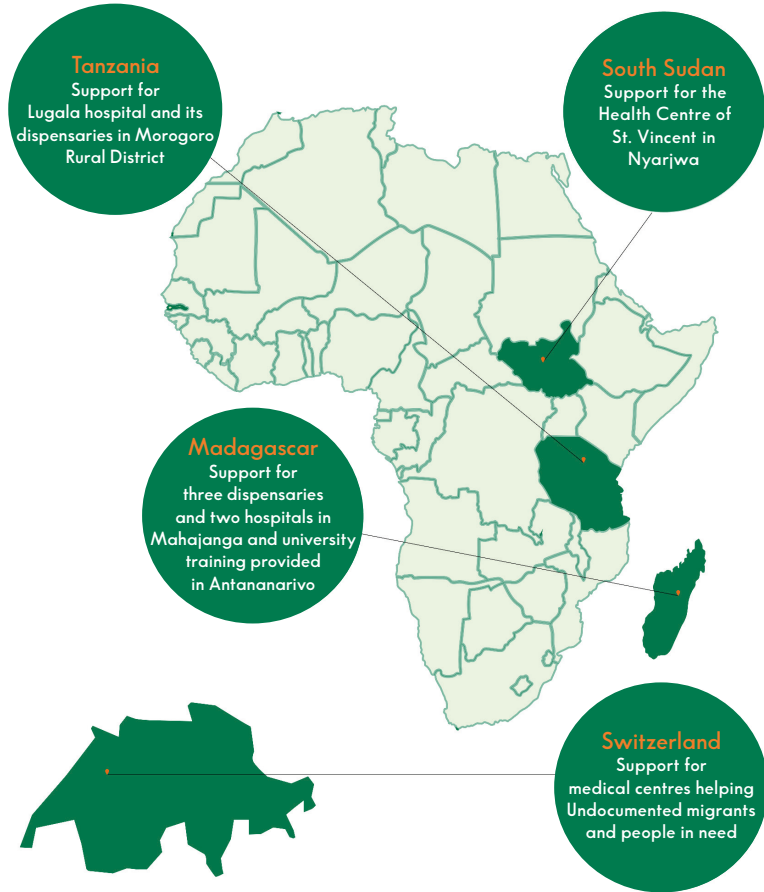
## Sustainable Development Goals

PSF Switzerland is committed to defending and promoting the 17 Sustainable Development Goals (SDGs), which are supported by the Swiss Confederation as part of the United Nations' global appeal. The association defends in particular :



# PSF Switzerland in the world

PSF Switzerland is currently active in the following 4 countries : Madagascar, South Sudan, Switzerland and Tanzania.



# Pharmacists Without Borders Switzerland, who are we ?

In 2021, PSF Switzerland's headquarters was able to count on the valuable work of Claire Normand, a communication and marketing specialist, hired through the PPE+ programme set up by *après*, a network part of the social and solidary economy (SSE) in Geneva.

In the field, the presence of volunteer pharmacists in the countries where PSF Switzerland is active was strongly diminished by the Covid-19 pandemic.

In Madagascar, due to entry restrictions imposed by the authorities, Dr. Claire Bertin was only able to go there in November 2021. Nevertheless, she continued to monitor the operations remotely. In addition to acting as an intermediary between the field and the headquarters, she worked on the development of five training modules as part of the new e-learning axis developed by PSF Switzerland.

To our regret, the constraints induced by the pandemic did not allow for a volunteer pharmacist to be sent to the field in Tanzania. The monitoring of the project was carried out exclusively remotely, with the exception of an assessment mission carried out in the field from 23 October to 7 November 2021 by Nicole Gallina, Coordinator, and Klara Hess, Project Officer of PSF Switzerland.

In 2021, PSF Switzerland has become more professional, with the appointment of a new fiduciary, Chavaz SA, charged to carry out a limited audit of the 2021 accounting year.

## Committee

**Marie-José Barbalat,**  
President

**Christophe Berger,**  
Secretary

**Stéphanie Martin Christie,**  
Treasurer

**Elodie Barbay**

**Sandra Girardet**

**Klara Hess**

**Marie-Carmen Josefowski-Paccaud**

**Stéphanie Mena**

**Sandrine Von Grünigen**

## Headquarters

**Nicole Gallina,** Coordinator (70%)

**Sonia Rodríguez (until May 2021),**  
Communication & Fundraising (20%)

**Amélie Höllmüller (from May 2021),**  
Communication & Fundraising (20%)

**Anne-Laurence Lacroix (June - Oct. 2021),**  
Project Management & Fundraising (40%)

**Sabina Sommaruga,** Project manager  
Undocumented migrants Switzerland (5%)

### *PPE+ & Volunteering*

**Claire Normand,**  
Marketing &  
Fundraising (50%)

## Field

**Madagascar Mission**

**Claire Bertin**  
(from November 2021)

# 2021 financial report

PSF Switzerland is a non-profit association according to article 60 and following of the Civil Code. The 2021 financial year was affected for the second consecutive year by the Covid health crisis, which led to changing realities in the field, including the closure of borders in Madagascar, the absence of volunteers on the ground in Tanzania and Madagascar, as well as difficulties in carrying out the assessment mission planned for South Sudan. For these reasons, many of the activities originally planned for this year have had to be postponed, resulting in an incomplete use of the funds allocated for our 2021 projects. The health crisis has also had an impact on local activities aimed at raising funds and donations to operate its structure.

The result of this slowdown of activities is a surplus of CHF 5,403.38. Despite this situation, PSF Switzerland can look back on a healthy financial year. The financing of its projects is mainly assured by grants from private and public institutions. The operating costs are covered by membership fees, donations from members, private donations and various promotional activities. As shown in the balance sheet below, the equity amounts to CHF 92,326.30, which gives PSF Switzerland a comfortable financial basis for the years to come.





# Closing balance sheet 31.12.2021

ASSETS		2021	2020
AVAILABLE	Treasury		
	Funds	113,20	31,70
	Postal checks	121 545,23	132 832,42
		857,45	1 543,40
		7 346,29	958,01
	Ofac - deposit account 304771	44 161,78	5 172,08
	Total	174 023,95	140 537,61
	Prepayments and accrued income	600,00	16 080,60
Total Available		174 623,95	156 618,21
<b>TOTAL ASSETS</b>		<b>174 623,95</b>	<b>156 618,21</b>
<b>LIABILITIES</b>		<b>2021</b>	<b>2020</b>
<b>FOREIGN FUNDS</b>	Liabilities on costs/services		
	Creditors	15 561,30	25 277,50
Total Foreign Funds		15 561,30	25 277,50
<b>ALLOCATED FUNDS</b>	South Sudan funds	2 579,70	1 779,70
	Madagascar funds	25 353,31	19 985,34
	« Undocumented migrants in Switzerland » Project funds	16 288,70	10 589,25
	Tanzania funds	22 514,56	1 256,66
Total allocated funds		66 736,27	33 610,95
<b>EQUITY</b>	Equity	97 729,76	93 360,18
	Current fiscal year	-5 403,38	4 369,58
Total Equity		92 326,38	97 729,76
<b>TOTAL LIABILITIES</b>		<b>174 623,95</b>	<b>156 618,21</b>

# Profit and Loss Accounts from 01.01.2021 to 31.12.2021

RECEIPTS	2021	2020	2019
South Sudan project			
Donations			
Sandoz Philanthropical Foundation	30 000.00	0.00	0.00
Anières	0.00	5 000.00	5 000.00
Bernex	0.00	5 000.00	0.00
Cologny	0.00	5 000.00	0.00
Private donation	0.00	0.00	150.00
Rotary Club donation	0.00	0.00	1 500.00
Lancy	5 000.00	6 000.00	6 000.00
Puiplinge	0.00	0.00	5 000.00
SIG donation	0.00	0.00	5 000.00
<b>Total South Sudan project</b>	<b>35 000.00</b>	<b>21 000.00</b>	<b>22 650.00</b>
Madagascar project			
Donations			
Basel-City	30 000.00	30 000.00	30 000.00
Bardonnex	0.00	3 600.00	0.00
Vandœuvres	0.00	0.00	5 000.00
City of Geneva	20 000.00	0.00	30 000.00
Swiss Embassy in Madagascar	0.00	2 596.32	0.00
Donations in memory of Prof. Olivier Bugnon	0.00	6 600.00	0.00
Piggybank donation Pelikan Apotheke ZH	400.00	400.00	0.00
Extraordinary income out of period	37.27	1 923.33	0.00
Onex	4 000.00	0.00	0.00
Grand-Saconnex	500.00	0.00	0.00
<b>Total Madagascar project</b>	<b>54 937.27</b>	<b>45 119.65</b>	<b>65 000.00</b>
Tanzania project			
Donations			
PharmaSuisse	10 000.00	10 000.00	10 000.00
Meyrin	49 000.00	0.00	30 000.00
Bellevue	3 500.00	3 500.00	4 000.00
Cologny	0.00	0.00	2 000.00
Chêne-Bourg	2 000.00	2 000.00	3 000.00
Gertrud von Haller Stiftung	0.00	0.00	3 000.00
Blooming Jumper Foundation	15 000.00	10 000.00	30 000.00
Grand-Saconnex	0.00	500.00	0.00
Ernst Göhner Stiftung	10 000.00	0.00	0.00
Vandœuvres	2 000.00	0.00	0.00
Troinex	250.00	0.00	0.00
<b>Total Tanzania project</b>	<b>91 750.00</b>	<b>26 000.00</b>	<b>82 000.00</b>
"Undocumented migrants Switzerland" project			
Donations			
Loterie Romande	0.00	0.00	20 000.00
Medpha Suisse	0.00	0.00	50.00
Sandoz Pharmaceuticals SA	10 000.00	0.00	9 999.00
Anonymous Foundation	0.00	0.00	4 000.00
Rotary Club Les Brusières	0.00	1 000.00	0.00
<b>Total "Undocumented migrants Switzerland" project</b>	<b>10 000.00</b>	<b>1 000.00</b>	<b>34 049.00</b>
Membership fees and donations			
Membership fees	39 425.99	39 774.05	40 969.00
Donations	30 846.96	36 892.22	35 804.80
Donation from an anonymous foundation	20 000.00	15 000.00	
<b>Total Membership fees and donations</b>	<b>90 272.95</b>	<b>91 666.27</b>	<b>76 773.80</b>
Other receipts			
Piggybank action	360.85	4 204.13	6 397.95
Toutext action	0.00	0.00	609.85
Cards action	8 100.00	323.50	550.00
Race for Gift action	0.00	0.00	4 792.20
Toothbrush action	519.15	0.00	780.00
<b>Total Other receipts</b>	<b>1 690.00</b>	<b>4 527.63</b>	<b>13 130.00</b>
<b>TOTAL RECEIPTS</b>	<b>283 650.22</b>	<b>189 313.55</b>	<b>293 602.80</b>

EXPENSES	2021	2020	2019
South Sudan project			
Purchase of medicines and equipment	-25 000.00	-16 500.00	-10 016.40
Pharmacy assistant training fees	-5 000.00	-3 000.00	-4 000.00
Technical support	0.00	-500.00	-2 504.00
Project management costs 12%	-4 200.00	-2 520.00	-2 718.00
<b>Total South Sudan project</b>	<b>-34 200.00</b>	<b>-22 520.00</b>	<b>-19 238.40</b>
Madagascar project			
Covid-19 support	-20 349.50	-3 376.40	0.00
Purchase of medicines and equipment	-14 109.30	-9 204.38	-11 781.50
Pharmacy assistant training fees	-8 200.00	-9 557.40	-8 200.00
Technical support	-1 610.51	-21 527.31	-16 825.64
Teaching University Pharmacy Faculty	0.00	-162.00	-3 752.16
Assessment mission	0.00	0.00	0.00
Project management costs 12%	-5 300.00	-5 180.00	-8 786.25
<b>Total Madagascar project</b>	<b>-49 569.31</b>	<b>-49 007.49</b>	<b>-49 345.55</b>
Tanzania project			
Purchase of medicines and equipment	-41 500.00	-23 000.00	-39 353.00
Pharmacy assistant training fees	-9 000.00	0.00	-5 000.00
Technical support	-4 424.60	-5 850.55	-21 942.40
Assessment mission	-4 557.50	0.00	0.00
Project management costs 12%	-11 010.00	-3 120.00	-10 025.80
<b>Total Tanzania project</b>	<b>-70 492.10</b>	<b>-31 970.55</b>	<b>-76 321.20</b>
"Undocumented migrants Switzerland" project			
Procurement, supply and management of medicines	-4 300.55	-15 842.05	-11 449.33
Project management costs 12%	0.00	0.00	-1 334.67
<b>Total "Undocumented migrants Switzerland" project</b>	<b>-4 300.55</b>	<b>-15 842.05</b>	<b>-12 784.00</b>
Administrative costs			
Salaries and social charges	-99 885.45	-84 661.15	-86 006.95
Premises expenses	-6 485.00	-6 405.00	-6 420.00
Advertising	-3 371.40	-3 835.84	-3 088.65
Insurances, contributions	-2 308.00	-1 825.10	-1 567.90
General administration costs	-5 513.00	-5 462.81	-4 425.84
Financial income and expense	-313.48	-454.42	-460.24
<b>Total Administrative costs</b>	<b>-117 876.33</b>	<b>-102 644.32</b>	<b>-101 969.58</b>
<b>TOTAL EXPENSES</b>	<b>-276 438.29</b>	<b>-221 984.41</b>	<b>-259 658.73</b>

ACTIVITIES OF THE ASSOCIATION	2021	2020	2019
Projects management	20 510.00	10 820.00	21 530.05
<b>Total Projects management</b>	<b>20 510.00</b>	<b>10 820.00</b>	<b>21 530.05</b>
Allocation to earmarked funds	-191 687.27	-93 119.65	-173 699.00
Use of earmarked funds	158 561.96	119 340.09	157 689.15
<b>RESULT OF THE YEAR</b>	<b>-5 403.38</b>	<b>4 369.58</b>	<b>9 464.27</b>

# The members of Pharmacists Without Borders Switzerland - an essential support

The number of members of PSF Switzerland has remained stable :  
In 2021, the association counted **450 members**.



Members are the backbone of the association, they support the vision and mission of PSF Switzerland. Thanks to their valuable and crucial support, consisting of membership fees and donations, PSF Switzerland can carry out its projects.

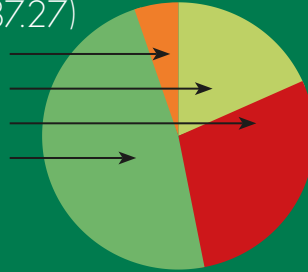
In 2021, the members supported **almost 60% of the total operating costs**. PSF Switzerland would like to warmly thank its members for their commitment and solidarity, which are indispensable to the success of the organisation.

Thanks to this valuable support, the Geneva office was able to deploy its forces in 2021, providing essential medicines to **225,000 patients in its countries of intervention** and supporting **7 medical centres in Switzerland** that work with undocumented migrants.

The growing inequalities in access to care and the realities on the ground are leading more and more structures to ask for help. PSF Switzerland is developing its activities in order to be able to support the most disadvantaged. As a result, PSF Switzerland has made its priority in 2022 **to expand its core membership in order to improve access to health care for the poorest and most vulnerable**.

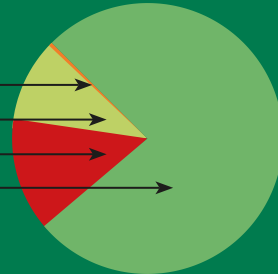
## Proceeds by projects (CHF 191,687.27)

Undocumented migrants Switzerland Project (5%)  
South Sudan Project (18%)  
Madagascar Project (29%)  
Tanzania Project (48%)



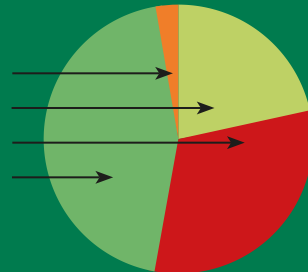
## Total proceeds (CHF 283,650.22)

Other proceeds (1%)  
Membership fees (10%)  
Donations (13%)  
Project grants (76%)



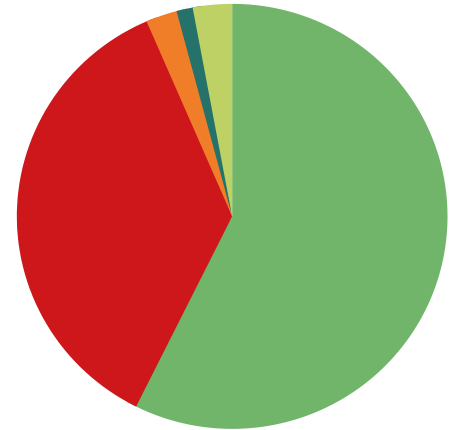
## Project expenses (CHF 158,561.96)

Undocumented migrants Switzerland Project (3%)  
South Sudan Project (22%)  
Madagascar Project (31%)  
Tanzania Project (44%)



## Total expenses

(CHF 276,438.29)



- Project expenses :  
CHF 158,561.96, 58%
- Staff expenses :  
CHF 99,885.45, 36%
- General administrative expenses :  
CHF 8,134.48, 3%
- Premises expenses :  
CHF 6,485.00, 2%
- Advertising :  
CHF 3,371.40, 1%

# The Tanzania Project, a positive development

During the past year, the Covid-19 pandemic forced PSF Switzerland to renounce the deployment of volunteer pharmacists in the field. However, the improvement of health conditions in Tanzania during the second semester made it possible for Nicole Gallina, Coordinator, and Klara Hess, PSF Project Officer, to carry out an assessment mission from 23 October to 7 November 2021.

This assessment mission was extremely productive regarding both the identification of the remaining difficulties and the positive improvements and developments that have been made possible by the support of PSF Switzerland. The meeting with Tanzanian strategic partners also confirmed the role and importance of PSF Switzerland's support for Lugala Hospital in particular, and for the Tanzanian health care system in general.

Although the absence of a volunteer pharmacist had a significant impact on the implementation of training and scientific support, it did, however, confirm the validity of PSF Switzerland's strategy of empowering its partners. Indeed, the financial support and the transfer of pharmaceutical skills provided by the volunteer pharmacists in the field over the past few years has had a very positive impact on the pharmaceutical management of the hospital as a whole. Most drug treatments are available, stock-outs are rare and patients are cared for by qualified staff.

*Assessment mission in Tanzania in Lugala School of Nursing, 2021. ©PSF Switzerland*



In 2021, **141,271 patients** were treated by Lugala Hospital, including **478 newborns** in the new maternity and neonatal unit funded by Solidarmed, one of the project partners. **A sum of CHF 41,500** was allocated by PSF Switzerland for the purchase of medicines (including antibiotics, analgesics and diuretics). This contribution is crucial as the health crisis has led to a significant increase in the price of medicines and other products, such as disposable gloves and essential primary materials for local therapeutic production, including hydroalcoholic solutions.

The assessment mission also enabled PSF Switzerland to identify new priorities for its future three-year project, in particular with regard to additional support for the supply of medicines to the maternity and neonatal unit, as well as training in community pharmacy for students at the nursing school in Lugala hospital. A total of **CHF 9,000** was allocated to the training of health staff.

*New maternity and neonatal unit at Lugala Hospital and waiting room at Lugala Hospital, 2021. ©PSF Switzerland*



# The Madagascar Project, an adaptation to field conditions

The closure of Madagascar's borders due to the Covid-19 pandemic has impacted the first year of the three-year project (2022-2024). Indeed, it was only in November 2021 that Dr. Claire Bertin was able to travel to Madagascar and resume her work with the three partner health centres (Aina Vao, Mahasoa and Fanantenana) located in the region of Mahajanga, the country's port city.

Despite her absence from the field, Dr. Claire Bertin maintained regular contact with the health staff of the three dispensaries involved in the project. This allowed her to exchange with them on their respective activities and to guide them if necessary. This 10-month interlude also highlighted the quality and importance of the work done by the volunteer pharmacist in the field, in terms of training and skills transfer. For example, the use of small laboratories is being reinforced and professionalised. Thanks to the workshops she initiated in 2020, the production of balms and hydroalcoholic gel is maintained, as is the repackaging of medicines.

*Madagascar, 2021. ©PSF Switzerland*





Health constraints also confirmed the need for PSF Switzerland to develop **an e-learning axis**.

**Four modules have been finalised and a fifth is being developed.** These modules, which are intended for dispensary counter staff of all levels, cover the introduction to medicines, the international non-proprietary name (INN), generics, pharmaceutical forms and pharmacological concepts (ADMEs and administration routes). Their format is intended to be fun and varied and takes the form of animations, videos or slide presentations. It should be noted that some of these modules, in addition to serving as training and knowledge exchange tools, can also support the awareness-raising work carried out in the field.

Finally, it should be noted that an amount of **CHF 14,000** was paid by PSF Switzerland for the purchase of medicines and medical equipment, to which should be added **CHF 8,200** for training costs.

In total, **75,489 patients** received medical care in the three health centres in 2021.

*Claire Bertin*

*Madagascar, 2021. ©PSF Switzerland*



# South Sudan, an indispensable support

Despite the constraints imposed by the Covid-19 pandemic, the results of this third and final year of the project (2019-2021) are positive overall.

St. Vincent Health Care Centre (SVHCC) in Nyarjwa remained open despite the health crisis, allowing **1,886 patients - including 1,228 children under 15 years old** - to receive medical care. 12 deliveries took place, with no post-partum complications.

Thanks to the financial support of PSF Switzerland, the supply of quality medicines to the SVHCC pharmacy has been regular, ensuring that it has the necessary pharmaceutical products to treat the most common illnesses. These include antibiotics, antimalarials, analgesics and antirheumatic drugs.

The establishment of a laboratory, since 2020, has made it possible to refine the delivery of care and treatment. In 2021, **1,445 patients** - half of them children under 15 years old - benefited from this service and were treated for malaria and gastrointestinal diseases (dysentery, amoebiasis, helminth infections in children) as well as respiratory tract infections.

*St. Vincent Health Care Centre (SVHCC) in Nyarjwa, 2021. ©PSF Switzerland*

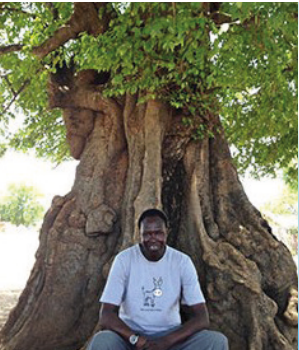


In the area of health education, which constitutes another focus of the project, workshops were held by Betram Gordon Kuol on Covid-19 preventive measures for members of the neighbouring communities. The preventive measures included hand washing, social distancing and wearing a mask. Training sessions were also provided on good hygiene and sanitation practices, to prevent malaria, water-borne and diarrheal diseases in children. In addition, a sum of **CHF 25,000** was donated by PSF Switzerland to finance quality medicines, as well as **CHF 5,000**, allocated to the training of health staff.

However, the Covid-19 pandemic forced PSF Switzerland to cancel its evaluation mission scheduled for June 2021. The mission is now planned for the first half of 2022, with the objective of making necessary adaptations to a future three-year project with the final objective to enable the autonomous operation of SVHCC. This mission will also be an opportunity to evaluate the use of the e-learning materials (USB keys) that were given to Betram Gordon Kuol at the end of last year. These e-learning courses, which are aimed at SVHCC health professionals, will contribute to the improvement of the daily delivery of health care services within SVHCC.

*Betram Gordon Kuol*

*St. Vincent Health Care Centre (SVHCC) in Nyarjwa, 2021. ©PSF Switzerland*



# Project Access to health for all, in Switzerland too !

Considering that local aid cannot be conceived without an action at the national level, and with a public health perspective, PSF Switzerland has been collaborating for about ten years within the national Platform for health care for Undocumented migrants, providing technical and logistical support, as well as pharmaceutical advice to the health centres associated with the Platform.

In 2021, **7 health care centres for Undocumented migrants** and vulnerable people directly benefited from the project managed by PSF Switzerland : Anlaufstelle für Sans-papiers (Basel), Dispensaire des Rues (Neuchâtel), Fri-Santé, Espace de soins et d'orientation (Fribourg), Gesundheitsversorgung für Sans-Papiers SRK (Bern), Meditrina (Zurich), Point d'Eau Lausanne (Lausanne) and Réseau Santé Migrations (La Chaux-de-Fonds).

This support was made possible by a grant received from Sandoz Pharmaceutical SA as well as donations of medicines, mainly generics, made possible by close partnerships with the pharmaceutical companies Vifor, Galderma, Streuli, Zambon and Sandoz.

Sabina  
Sommaruga



©PSF Switzerland



# PSF Switzerland in action

## Roundtable with the Association of Pharmaceutical Sciences Students of the University of Geneva (AESP)

On 4 March 2021, PSF Switzerland co-organised a roundtable entitled «The pharmacist : a necessity in humanitarian action» with the AESP and Doctors Without Borders (MSF) that piqued the interest of up to 55 people on Zoom. On this occasion, Dr. Claire Bertin, volunteer pharmacist in Madagascar for PSF Switzerland, and Sabina Sommaruga, pharmacist co-founder of PSF Switzerland and responsible for the Undocumented migrants project in Switzerland, shared their experience in humanitarian work. This meeting, rich in concrete situations, demonstrated the implication of the pharmacist in humanitarian action and its importance both in establishing a strategy for the efficient delivery of medicines and in patient care.

## Alternatiba Lemman Festival

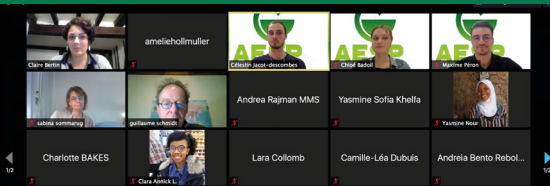
For the first time since its creation, PSF Switzerland participated in the Alternatiba Lemman Festival, which took place on 4 September 2021 at the Parc des Bastions and which brought together more than 180 associations active in the defence and promotion of the 17 Sustainable Development Goals. On this occasion, PSF Switzerland raised awareness of its actions in favour of access to quality care everywhere and for everyone, as well as of its approach to unused medicines ("MNU").

## Medicus Mundi Switzerland (MMS) roundtable

In the framework of the initiative «Leaving no one behind» (LNOB), PSF Switzerland participated in a roundtable discussion, organised by Medicus Mundi Switzerland (MMS) on 5 October 2021. The discussion was devoted to the needs of community health in the context of development cooperation projects. Stéphanie Mena, pharmacist, member of PSF Switzerland's Committee and responsible for the Madagascar project, along with Dr. Claire Bertin spoke about their respective experiences working in Switzerland. They also shared their thoughts on the new challenges regarding community health.

Roundtable with AESP, 2021. ©PSF Switzerland

Alternatiba Festival, 2021. ©PSF Switzerland



# Thank you

PSF Switzerland would like to thank all its generous donors, members and funders who make it possible to help the projects' beneficiaries. The association would also like to thank the people who support the activities of PSF Switzerland. We would like to extend special thanks to the Ofac Cooperative, our mission volunteers, our members and our volunteers, without whose support we could not exist.

## **PSF Switzerland members who support us !**

**2021 Mission volunteer** : Claire Bertin

**Auditor** : Anthony Huguenin, Fiduciare Chavaz SA à Carouge (GE)

**Sponsors and financial partners** : Apotheke Gelterkinden, Apotheke zum Mörser GmbH (Zürich), Paul Jean Berthoud, Blooming Juniper Foundation, Simon et Silvia Buechi, Canton de Bâle-Ville, Family and friends of Jean-Pierre de Cocatrix, Commune de Bellevue, Commune de Chêne-Bourg, Commune de Troinex, Commune de Vandœuvres, Anne-Marie Cordonier, Nicolas et Sabine Cordonier, Marco Gaia, Galenica AG, Fondation Ernst Gøehner, Family and friends of Beatrice Jaeggi, Notfall-Apotheke Basel, Sandoz Pharmaceuticals SA, Novio Verwaltungs AG, Family and friends of Reto Maurizio, Family and friends of P.-A. Nussbaumer, Pharmacie Les Crêtes SA (Grimisuat), pharmaSuisse, Fondation philanthropique Famille Sandoz, Anton Schmidt-Vasta, Family and friends of Guenther Steineberg, TopPharma Apotheke Paradeplatz AG (Zürich), Nadia Michèle Villard, Ville de Genève, Ville du Grand-Saconnex, Ville de Lancy, Ville de Meyrin, Ville d'Onex, Elisabeth Anderegg Wirth, as well as foundations and private individuals who wish to remain anonymous or who have supported PSF Switzerland via TWINT.



*On the way to the dispensary, Tanzania, 2021. ©PSF Switzerland*

**Operational partners** : Association Suisse des Amis de Sœur Emmanuelle, Diocèse E.L.C.T. Ulanga Kilombero (Tanzania), Hôpitaux Universitaires de Genève (HUG), Médecins Sans Frontières Suisse, Pharmelp, Plate-forme nationale pour l'accès aux soins de santé des Sans-papiers, Polyclinique Médicale Universitaire (Lausanne), Sœurs des Sacrés Cœurs de Jésus et de Marie (Fanantenana, Madagascar), Sœurs de Saint-Maurice (Aina Vao, Madagascar), Sœurs Franciscaines Servantes de Marie de Blois (Mahasoa, Madagascar), SolidarMed, St. Vincent de Paul Society (South Sudan), Université de Genève.

**Other partners** : après (Le réseau de l'économie sociale et solidaire), Association Suisse des Etudiants en Pharmacie, Association Reklam, Fédération Vaudoise de Coopération, Maison Internationale des Associations, Medicus Mundi Schweiz, Notar-It (Information technology), Travelling 2000, Embassy of Switzerland in Tanzania.

**Collaborators and volunteers** : Claire Normand, Anne Christine Cordonier

## Our motivations *« Our first duty is human solidarity. » Susan Sontag*

Access to essential medicines is an integral part of the universal right to health.

Health care today is more of a privilege than a right for everyone. Millions of people die every year in poor countries from diseases that are curable or controllable in Switzerland, due to lack of access to care and medicines.

Almost one in three people in the world do not have access to Essential Medicines.

Inequalities in diseases are intolerable.

There is a great shortage of qualified staff in poor countries.


*Sources : United Nations Secretary-General's High-Level Panel on Access to Medicines (2016), Ruth Dreifuss, co-leading the expert group. Unicef Kid information Madagascar (2014).*

Pharmaciens Sans Frontières Suisse, Maison des Associations, 15 Rue des Savoises, 1205 Genève  
IBAN : CH88 0900 0000 1201 0997 6

Writing : Anne-Laurence Lacroix, Nicole Gallina, Marie-José Barbalat

Graphism and printing : Sarah Duvillard, Association Reklam

Cover photo : Patients care at Aina Vao dispensary,  
Madagascar, 2021. ©PSF Switzerland

Follow us on    and on our website - [www.psf.ch](http://www.psf.ch)



Pharmaciens sans Frontières  