

PHARMACISTS WITHOUT BORDERS SWITZERLAND

Annual report 2025

A year of sharing knowledge





The members of the Committee (from left to right and from top to bottom) :
Marie-José Barbalat, Elodie Barbay, Christophe Berger, Marie-Carmen Josefovski-Paccaud, Klara Hess,
Nadyenur Kaygiz, Stéphanie Martin Christie, Stephanie Mena, Sandrine Von Grünigen.



The office team :

Christelle Badino Brás, Sabina Sommaruga,
Adrienne Ruffieux and Thierry Philbet.

A WORD FROM THE COMMITTEE

Dear Members, Partners and Friends of PSF Switzerland,

In 2025, PSF Switzerland continued its work in a challenging global context, marked by drastic cuts in funding for international health aid - particularly from USAID (the United States Agency for International Development) - as well as by geopolitical tensions affecting many of our areas of operation. Despite these challenges, local teams and PSF Switzerland pharmacists in the field demonstrated remarkable dedication and commitment, helping to improve access to healthcare and essential medicines in underserved and remote regions.

In Madagascar, Tanzania, South Sudan, Lebanon and Switzerland, the financial and technical support we provide to healthcare facilities has helped sustain vital services for vulnerable populations, particularly care for children, pregnant women and the elderly. At the same time, training and capacity building for local healthcare staff remain at the heart of our work, promoting the autonomy and long-term sustainability of these structures.

We would like to extend our heartfelt thanks to our members for their support, our partners for their collaboration, and our field teams for their professionalism, as well as to all the individuals and institutions who place their trust in us. Thanks to this strong collective commitment, PSF Switzerland can continue to act where needs are greatest and bring hope to particularly vulnerable populations. Your support is invaluable: it enables us to successfully carry out our five projects and ensure access to healthcare for all.

With gratitude and hope,
The PSF Switzerland Committee

Pharmacists Without Borders Switzerland (PSF Switzerland) is a non-profit association under Swiss law founded in 1992 in Geneva.

THE VISION OF PSF SWITZERLAND

To ensure access to health care for everyone everywhere, without discrimination of any kind.

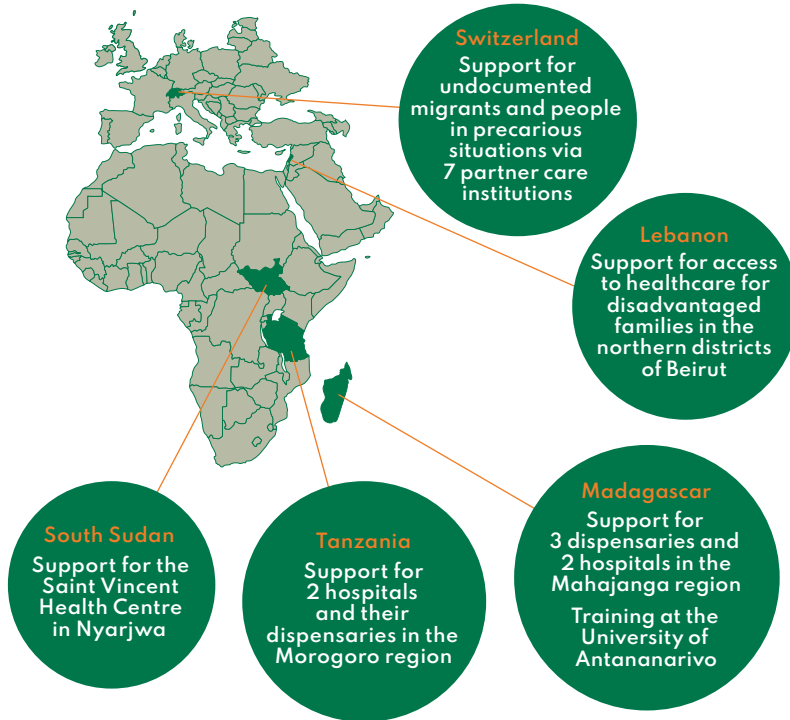
THE MISSION OF PSF SWITZERLAND

To improve access to quality medicines for the most vulnerable populations, to exchange knowledge and to promote the rational use of medicines in the interest of public health.

SUSTAINABLE DEVELOPMENT GOALS

PSF Switzerland is committed to defending and promoting the 17 Sustainable Development Goals (SDGs), which are supported by the Swiss Confederation as part of the United Nations' global appeal. The association defends in particular :





PSF SWITZERLAND IN THE WORLD

PSF Switzerland is currently active in the following 5 countries :
Lebanon,
Madagascar
South Sudan,
Switzerland and
Tanzania.

PHARMACISTS WITHOUT BORDERS SWITZERLAND, PRESENTATION AND NOVELTIES

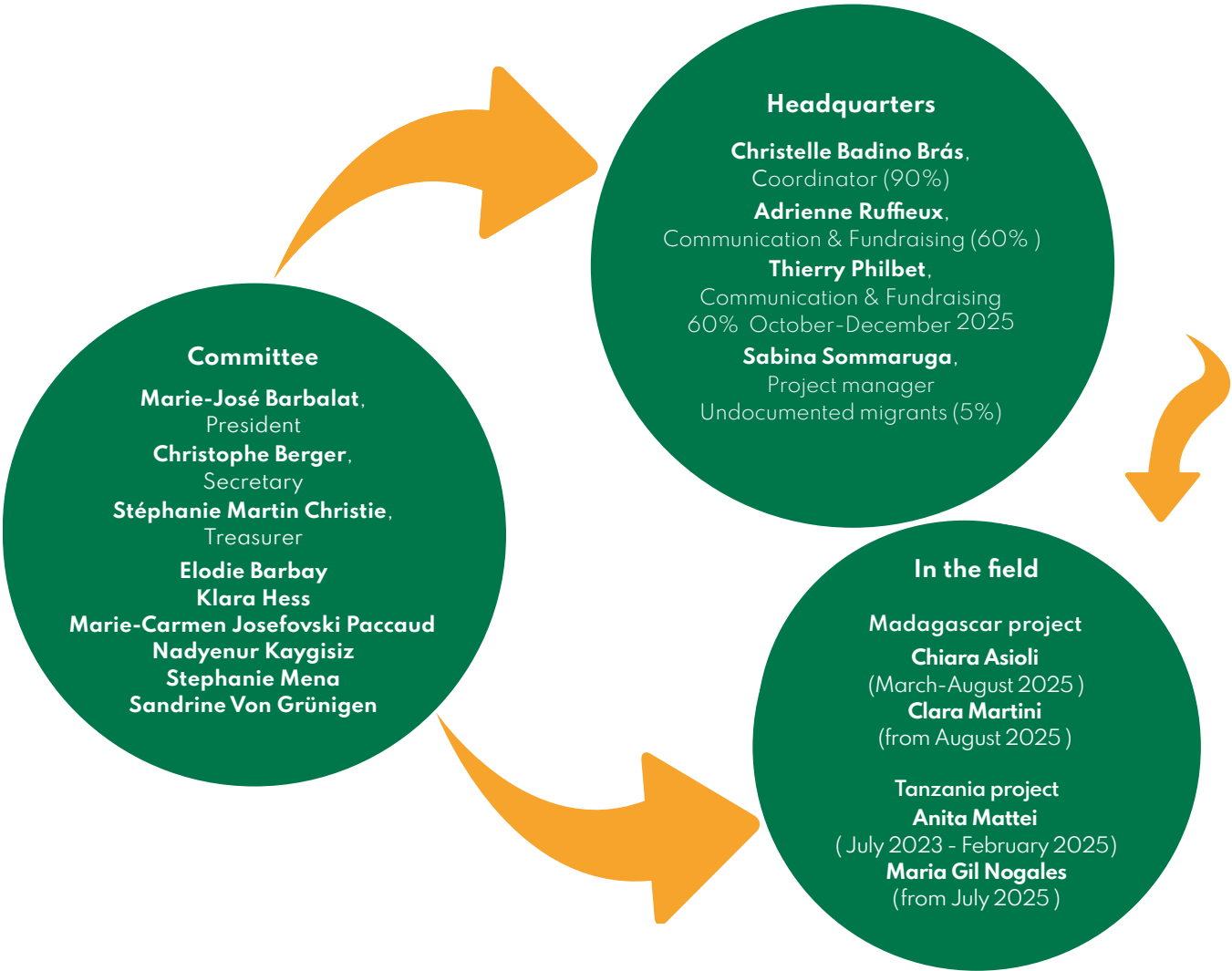
Three volunteer pharmacists in the field. In Madagascar, Chiara Asioli, who arrived in March 2025, followed by Clara Martini in August 2025, took over from Lara Collomb. In turn, they supported dispensary staff and were deeply involved in capacity building and training. In Tanzania, Maria Gil Nogaes arrived in June to continue the work of Anita Mattei. Over the course of a year, she provided technical and pharmaceutical expertise to staff across the many healthcare facilities supported, including the mobile palliative care unit of Lugala Hospital. Our sincere thanks to all three for their remarkable commitment and their daily work in support of vulnerable populations.

Three interns. In February, Thierry Philbet completed an initial internship in Tanzania as part of the “Humanitarian Pharmacy and International Solidarity” diploma (University of Lyon). From April to June, he then contributed to fundraising and communication activities at headquarters in Geneva. In Madagascar, Kokob Teweldemedhin carried out her Master’s research in pharmaceutical sciences (UNIGE) on the implementation of the e-learning modules developed by PSF Switzerland in collaboration with Pharm-Ed. Naila Abad chose to complete the five weeks of her final-year elective internship (Master’s in Pharmacy, UNIGE) at our association’s headquarters. She brought great energy and a fresh perspective to our activities. Our warm thanks to all three for their valuable contributions.

A first... for the Committee. At the beginning of March, all members of the Committee and the Executive Board met in Leukerbad for a working weekend. Two days that were both engaging and productive, rich in insights and future perspectives for PSF Switzerland.

A (temporary) replacement. From September onwards, Thierry Philbet was hired at headquarters to replace Adrienne Ruffieux during her maternity leave. Our fundraising and communications assistant will resume her position in February 2026.

Finally, PSF Switzerland continued its collaboration with Chavaz SA, acting as statutory auditor, to carry out a limited review of the 2025 financial year.



Committee

Marie-José Barbalat,
President

Christophe Berger,
Secretary

Stéphanie Martin Christie,
Treasurer

Elodie Barbay
Klara Hess

Marie-Carmen Josefovski Paccaud
Nadyenur Kaygisiz
Stephanie Mena
Sandrine Von Grünigen

Headquarters

Christelle Badino Brás,
Coordinator (90%)

Adrienne Ruffieux,
Communication & Fundraising (60%)

Thierry Philbet,
Communication & Fundraising
60% October-December 2025

Sabina Sommaruga,
Project manager
Undocumented migrants (5%)

In the field

Madagascar project

Chiara Asioli
(March-August 2025)

Clara Martini
(from August 2025)

Tanzania project

Anita Mattei
(July 2023 - February 2025)

Maria Gil Nogales
(from July 2025)

2025 FINANCIAL REPORT

PSF Switzerland is a non-profit association governed by Articles 60 et seq. of the Swiss Civil Code. Since 2024, PSF Switzerland has been registered with the Commercial Register of the Canton of Geneva.

The 2025 financial year saw mixed trends in funding. Donations and membership fees increased, reflecting the continued and growing support of PSF Switzerland's members and partners. At the same time, budget cuts in development cooperation had an impact on the resources received, as many organizations turned to a smaller number of donors. Despite the reduction in project-specific funding, all essential project activities were successfully carried out.

Overall expenses remained stable compared with 2024, demonstrating careful cost management. However, although unrestricted donations grew, the decline in project-dedicated funding, combined with steady expenses, could not be fully offset. This resulted in a net loss of CHF 14,605.23 for the 2025 financial year.

Nonetheless, 89PSF Switzerland continues to demonstrate financial resilience. As shown in the balance sheet, equity stands at CHF 36,518.52. Projects were able to proceed thanks to available resources, and the association continues to benefit from the loyal support of its donors, as well as contributions from public and private institutions. This strong foundation allows PSF Switzerland to continue its activities with confidence, while underscoring the importance of further strengthening fundraising efforts in the years ahead, both for projects and operational costs.

Closing balance sheet 31.12.2025

ASSETS		2025	2024	2023
AVAILABLE	Treasury			
	Funds	130.45	138.50	140.55
	post al checks	176 853.23	205 852.04	283 624.21
	The Mauritius Commercial Bank	279.80	1 118.60	451.14
	Ofac - deposit account 304771	9 804.78	17 026.31	49 487.23
	Total	187 048.26	224 135.45	333 703.13
	Other debtors	-	55.40	-
	Prepayments and accrued income	19 071.75	5 681.30	4 098.70
Total Available		206 140.01	229 872.15	337 801.83
TOTAL ASSETS		206 140.01	229 872.15	337 801.83
LIABILITIES		2025	2024	2023
FOREIGN FUNDS	Liabilities on costs / services			
	Creditors	4 509.66	1 292.50	7 860.50
	Accruals and deferred income	30 000.00	43 923.85	35 000.00
Total Foreign Funds		34 509.66	45 216.35	42 860.50
ALLOCATED FUNDS	South Sudan funds	459.01	1 266.26	4 126.70
	Madagascar funds	7 681.97	17 059.08	33 680.26
	"undocumented migrants in Switzerland" Project funds	17 586.60	16 342.40	15 941.45
	Tanzania funds	-	14 444.91	69 579.16
	Lebanon funds	109 384.25	84 419.40	102 558.75
Total Allocated Funds		135 111.83	133 532.05	225 886.32
EQUITY	Equity	51 123.75	69 055.01	72 784.47
	Current fiscal year	-14 605.23	-17 931.26	-3 729.46
Total Equity		36 518.52	51 123.75	69 055.01
TOTAL LIABILITIES		206 140.01	229 872.15	337 801.83

Profit and loss Accounts - from 01.01.2025 to 31.12.2025

RECEIPTS	2025	2024	2023
PROJECT DONATIONS			
South Sudan project	324 635.90	224 819.30	381 500.00
	-	-	7 500.00
	5 000.00	5 000.00	4 000.00
	5 000.00	5 000.00	5 000.00
	2 500.00	-	-
	15 000.00	20 000.00	20 000.00
	10 000.00	-	-
	-	2 182.00	-
Total South Sudan project	37 500.00	32 182.00	36 500.00
Madagascar project			
	10 000.00	-	-
	20 000.00	20 000.00	15 000.00
	2 150.00	-	1 000.00
	-	-	3 000.00
	-	-	1 000.00
	-	2 000.00	3 000.00
	-	5 000.00	-
	-	-	15 000.00
	-	-	400.00
	5 000.00	5 000.00	5 000.00
	500.00	500.00	200.00
	-	200.00	400.00
	-	200.00	-
	3 600.00	-	-
	85.90	-	-
Total Madagascar Project	41 335.90	32 900.00	44 000.00
Tanzania project			
	-	-	65 000.00
	-	20 000.00	20 000.00
	50 000.00	-	36 000.00
	-	200.00	-
	-	-	30 000.00
	2 500.00	-	-
	-	5 000.00	-
	-	3 500.00	-
	3 500.00	-	-
	5 000.00	-	-
	1 000.00	1 000.00	-
	3 000.00	2 000.00	-
Total Projet Tanzania	66 000.00	31 700.00	151 000.00
"Undocumented migrants Switzerland" project			
	-	-	-
	10 000.00	7 500.00	-
	7 500.00	5 000.00	-
	-	4 137.30	-
	1 000.00	-	-
Total "Undocumented migrants Switzerland" project	18 500.00	16 637.30	-
Lebanon project			
	-	-	-
	16 650.00	16 700.00	25 000.00
	16 650.00	16 700.00	25 000.00
	50 000.00	50 000.00	50 000.00
	25 000.00	25 000.00	25 000.00
	-	-	25 000.00
	3 000.00	3 000.00	-
	50 000.00	-	-
Total Lebanon project	161 300.00	111 400.00	150 000.00
Membership fees and donations			
	34 515.00	34 710.00	36 495.00
	57 709.54	51 374.04	56 260.00
Total Membership fees and donations	92 224.54	86 144.04	92 755.00
Other receipts			
	3 214.26	2 387.43	3 309.42
	8 463.93	7 483.50	6 565.00
	5 847.93	8 906.79	15 979.00
	2 000.00	2 000.00	2 000.00
	10.98	-	45.56
Total Other receipts	19 539.12	20 376.72	27 898.98
TOTAL RECEIPTS	436 399.56	331 343.06	502 153.98

EXPENSES	2023	2024	2025	2026
PROJECT EXPENSES				
South Sudan project	-324 705.30	-310 673.57	-324 705.30	-306 230.18
Purchase of medicines and equipment	-20 000.00	-20 455.00	-20 000.00	-21 000.00
Pharmacy staff salaries	-12 500.00	-6 500.00	-12 500.00	-14 000.00
Technical support	-1 307.25	-4 225.60	-1 307.25	-1 477.05
Project management costs 12%	-4 500.00	-3 861.84	-4 500.00	-4 380.00
Total South Sudan project	-38 307.25	-35 042.44	-38 307.25	-40 857.05
Madagascar project				
Covid-19 support/E-learning	-4 428.31	-772.54	-4 428.31	-1 054.15
Purchase of medicines and equipment	-10 303.65	-13 420.75	-10 303.65	-10 666.64
Pharmacy staff salaries	-9 200.00	-9 200.00	-9 200.00	-8 200.00
Technical support	-20 011.02	-15 218.20	-20 011.02	-14 732.90
Teaching University Pharmacy Faculty	-421.93	-3 305.70	-421.93	-500.00
Assessment mission	-914.55	-2 298.15	-914.55	-602.45
Project management costs 12% of expenses	-5 433.54	-5 305.84	-5 433.54	-4 290.74
Total Madagascar project	-50 713.00	-49 521.18	-50 713.00	-40 046.88
Tanzania project				
Purchase of medicines and equipment	-40 000.00	-36 000.00	-40 000.00	-38 000.00
Pharmacy staff salaries	-13 500.00	-13 500.00	-13 500.00	-13 500.00
Technical support	-16 674.10	-21 701.85	-16 674.10	-11 747.10
Compounding area in Hospital of Lugala / Renovation				
Alwaya / Palliative mobile unit	-4 000.00	-3 000.00	-4 000.00	-10 000.00
Assessment mission	-	-2 328.40	-	-
Project management costs 12%	-7 920.00	-3 804.00	-7 920.00	-18 120.00
Total Tanzania project	-82 094.10	-80 334.25	-82 094.10	-91 367.10
"Undocumented migrants Switzerland" project				
Procurement, supply and management of medicines	-11 932.85	-11 080.05	-11 932.85	-14 087.95
IT and communication costs	-363.30	-136.00	-363.30	-314.25
Project management costs	-4 959.45	-5 020.30	-4 959.45	-5 283.05
Total "Undocumented migrants Switzerland" project	-17 255.60	-16 236.35	-17 255.60	-19 685.25
Lebanon project				
Purchase of medicines and equipment	-89 613.50	-84 320.65	-89 613.50	-69 839.25
Salaries for social workers and pharmacy staff	-18 400.00	-17 238.20	-18 400.00	-14 778.25
Technical support	-1 617.05	-	-1 617.05	-2 851.20
Assessment mission	-704.60	-1 980.50	-704.60	-805.20
Project management costs	-26 000.00	-26 000.00	-26 000.00	-26 000.00
Total Lebanon project	-136 335.15	-129 539.35	-136 335.15	-114 273.90
Administrative costs				
Salaries and social charges	-1 48 400.95	-145 437.00	-1 48 400.95	-152 238.80
Premises expenses	-6 579.00	-6 579.00	-6 579.00	-6 405.00
Advertising and professional fees	-9 441.91	-9 505.35	-9 441.91	-13 281.41
Insurances, contributions	-1 205.00	-1 205.00	-1 205.00	-1 205.00
General administration costs	-7 554.01	-5 505.53	-7 554.01	-8 169.68
Financial income and expense	-351.82	-215.12	-351.82	-1 157.34
Total Administrative costs	-173 532.69	-168 447.00	-173 532.69	-182 457.23
TOTAL EXPENSES	-498 237.99	-479 120.57	-498 237.99	-486 687.41
ACTIVITIES OF THE ASSOCIATION				
Projects management	48 812.99	43 991.98	48 812.99	58 073.79
Total activities of the association	48 812.99	43 991.98	48 812.99	58 073.79
OPERATING RESULT BEFORE ALLOCATION OF FUNDS	-13 025.44	-103 785.53	-13 025.44	71 540.36
Allocation to earmarked funds	-324 635.90	-224 819.30	-324 635.90	-381 500.00
Use of earmarked funds	323 056.11	310 673.57	323 056.11	306 230.18
RESULT OF THE YEAR	-14 605.23	-17 931.26	-14 605.23	-3 729.46

THE MEMBERS OF PHARMACISTS WITHOUT BORDERS SWITZERLAND - AN ESSENTIAL SUPPORT

The number of PSF Switzerland members has increased slightly, with **460 members** registered in 2024.



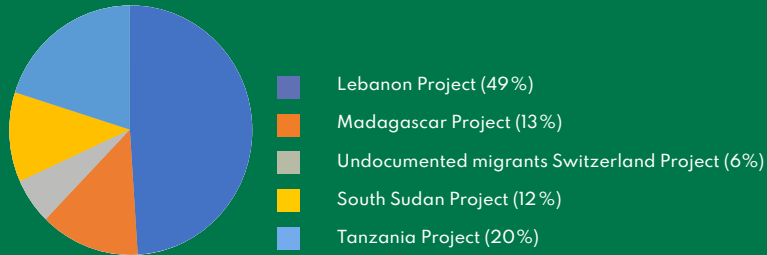
Members form the backbone of an association, supporting the vision and mission of PSF Switzerland. Thanks to their precious and crucial support in the form of membership fees and donations, PSF Switzerland is able to carry out its projects.

The members support **almost 60% of the total operating costs**, which are essential for carrying out the projects. PSF Switzerland would like to thank its members warmly for their indispensable commitment and solidarity.

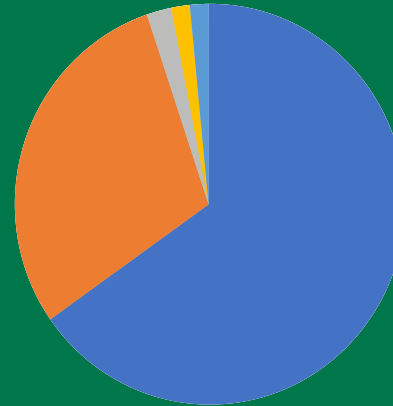
Thanks to this invaluable support, the Geneva office was able to deploy its forces in 2025, providing essential medicines to **250,000 patients in the countries of intervention** and supporting **7 medical centres in Switzerland** that work with undocumented migrants.

Growing inequalities in access to healthcare and the realities on the ground are leading more and more structures to ask for help, prompting PSF Switzerland to expand in order to be able to support the most disadvantaged. As a result, PSF Switzerland still prioritizes **expanding its core membership to improve access to healthcare for the most disadvantaged.**

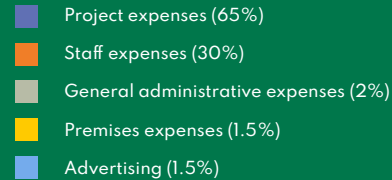
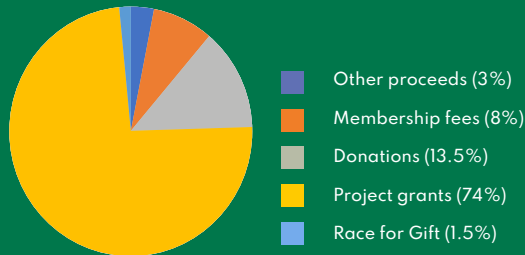
Proceeds by project (CHF 324,635.90)



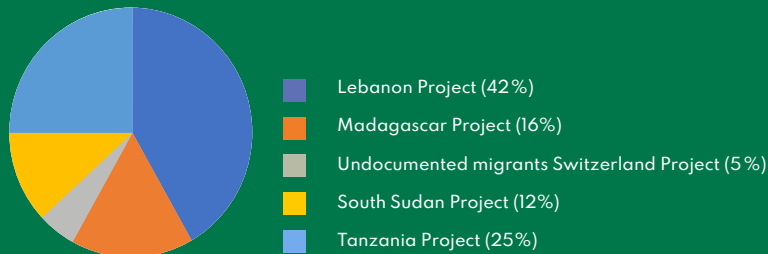
Total expenses (CHF 498,237.99)



Total proceeds (CHF 436,399.56)



Project expenses (CHF 324,705.30)






5 projects

250'000
direct
beneficiaries

460 members of
the association

20 supported
health centres



CHF 180,000
to support
the purchase of
medicines

3 PSF Switzerland
pharmacists
in the field for
skills transfer

30 training sessions
delivered

TANZANIA, ACCESS TO MEDICINES FOR RURAL COMMUNITIES

In 2025, PSF Switzerland continued its project in **Tanzania (2025–2027)**, aimed at improving **access to quality medicines and strengthening pharmaceutical skills** in the districts of Malinyi and Ulanga. The year was marked by the departure of Anita Mattei after 18 months of service and the arrival of Maria Gil Nogales, who continues to provide technical and pharmaceutical support to dispensaries and newly established healthcare facilities.

Thanks to the project, Lugala Hospital now has a **functional preparation room and a renovated infusion unit, producing nearly 1,500 bottles of injectable solutions per month. The pharmacy at the Mwaya health centre has also been renovated, optimising the management and storage of medicines.** PSF Switzerland has provided funding of nearly **CHF 35,000 for essential medicines, CHF 5,000 for the maternity and neonatal unit and CHF 13,500 for the salaries of local pharmaceutical staff.**

PSF Switzerland pharmacists provided **training not only to staff working in local health facilities, but also to nursing students at Lugala College of Health and Allied Sciences. These trainings cover good pharmaceutical practices** and a range of topics tailored to local needs, with the aim of strengthening autonomy and improving the quality of care. **Since the initiative began, support to a mobile palliative care unit has enabled more than 150 patients with chronic conditions to receive care at home, thereby reinforcing the project's interdisciplinary nature.**

Despite a challenging political and security context, PSF Switzerland's actions have contributed to sustainably strengthening access to medicines and the skills of local healthcare professionals, improving the quality of care for the entire population. **Our interventions are all the more meaningful given that the health facilities we support are located in rural, isolated districts that are difficult to access during the rainy season.**



Maria Gil Nogales with the Ngalimila dispensary team, Tanzania, 2025, ©PSF Switzerland.

MADAGASCAR, TRAINING AND EMPOWERING COMMUNITY PHARMACY STAFF

In 2025, PSF Switzerland continued its three-year project in Madagascar (2024–2026), **aimed at improving access to quality medicines and strengthening skills in community pharmacy** within a context of fragile infrastructure, limited financial resources, and unequal access to healthcare.

The pilot implementation of e-learning modules in community pharmacy, carried out by **Kokob Teweldemedhin**, a Master's student in Pharmaceutical Sciences at the University of Geneva, in collaboration with the on-site PSF Switzerland pharmacist and **the local student and teaching community**, represents a major advancement for the project. Kokob actively contributed to the development of the modules, while the beneficiaries were the 24 counter staff who completed the program during her presence. **These modules, developed by PSF Switzerland with support from the Pharm-ED platform**, and accompanied by a questionnaire and practical exercises, were very well received, reflecting **the local health teams' interest and motivation to improve their skills in medicine management and safe dispensing**. **Knowledge improvement was observed after the training**, with participants' scores increasing significantly.

Chiara Asioli (March–August) and then Clara Martini (from August), PSF Switzerland pharmacists, successively provided ongoing training on **good pharmacy practices** and **various topics requested by local health staff**. PSF Switzerland allocated nearly **CHF 20,000** for the purchase of essential medicines, medical equipment, and to finance part of local staff salaries.

With **45,000 consultations** across healthcare facilities, our interventions contribute to **sustainably strengthening local skills and improving the quality of care** in the Mahajanga region of Madagascar.



Chiara Asioli with the students of the School of Pharmacy of Mahajanga, Madagascar, 2025, ©PSF Switzerland.



Pharmacist at the Saint-Vincent de Paul health centre (CSSV), Nyarjwa, South Sudan, 2025, ©PSF Switzerland.

SOUTH SUDAN, A HEALTH OASIS IN A MEDICAL DESERT

In 2025, the Saint-Vincent de Paul health centre (CSSV) in Nyarjwa continued its activities **despite a resurgence of fighting** and a deterioration of the health situation. These conditions forced PSF Switzerland to cancel on-site monitoring missions, but **did not interrupt the centre's daily operations**.

PSF Switzerland was able to maintain remote support in close collaboration with its local partner, the Saint-Vincent-de-Paul Society (SVDP). A visit to Geneva in May 2025 by Betram Kuol, SVDP's project coordinator, provided a detailed update on the center's activity, which in recent months has been marked by an **influx of patients arriving from the nearby capital, Juba. Most of these patients are chronically ill** and require regular follow-up. This development **highlights the central - and even vital - role that CSSV now plays** in a country devastated by conflict, where functioning healthcare infrastructure is scarce.

In 2025, the centre received between 250 and 350 patients per month, **totaling 3,318 consultations and 2,835 laboratory tests, with children representing approximately two-thirds of patients seen in consultations**. PSF Switzerland supported the center by granting **CHF 20,000 for the purchase of essential medicines and CHF 12,500 for pharmacy staff salaries, ensuring a regular supply of medicines and safe dispensing of treatments**.

Prenatal care activities are also a focus of our project: in 2025, **eight pregnancy follow-ups and four deliveries, including the birth of twins, were conducted under safe and appropriate conditions**.

From the outset, **skills transfer to the centre's staff has been another priority**, particularly in pharmacy management. This "knowledge transfer" without a pharmacist on site is made possible through the e-learning modules of the PharmEd platform, developed in collaboration with the University of Geneva (UNIGE).

LEBANON, REGULAR ACCESS TO ESSENTIAL MEDICINES

Since 2022, the project “Enabling Access to Medicines for Disadvantaged Neighborhoods in Lebanon” has supported three partners in Beirut: Father Paul Nahed’s program in Daoura and Bourj Hammoud, the St Maroun dispensary in Baouchrieh, and the La Croix Psychiatric Hospital. In 2025, Father Paul’s program dispensed **over 1,200 prescriptions and provided follow-up care to around 100 patients per month**. The St Maroun dispensary also supports approximately **100 patients** monthly, while the central pharmacy at the Psychiatric Hospital serves **a patient base of 800 to 1,200 beds**.

In the context of a deep economic, social, and health crisis, **these facilities provide vulnerable populations with regular access to essential medicines and social support**. Funding from PSF Switzerland, totaling **CHF 108,000 in 2025**, covered the purchase of essential medicines, medical equipment, and part of the salaries of local staff.

PSF Switzerland pharmacist Michela Pironi, who had just **arrived in January 2026 to strengthen local skills, train teams, and manage stock**, had to be **repatriated in March 2026 due to the outbreak of war in the Middle East**. Despite this situation, Michela and PSF Switzerland **continue to support the local teams remotely**.

We would like to express our solidarity and gratitude to **our partners on the ground, who continue every day**, sometimes under bombing, **to ensure the dispensation of medicines to the most vulnerable people in Beirut**. Their dedication and courage remain essential to guaranteeing access to care where it is most needed.



Pharmacy team of the La Croix Psychiatric Hospital in Lebanon, 2025, ©PSF Switzerland.

SWITZERLAND, ACCESS TO HEALTHCARE FOR ALL!

In Switzerland, between 100,000 and 300,000 undocumented migrants live in precarious conditions. These circumstances often make access to healthcare and medical follow-up difficult, increasing health risks for these populations. Although the right to health is universal, some regions lack structures that facilitate access to care for the most vulnerable.

Pharmacists Without Borders Switzerland continues its commitment, **in collaboration with the National platform for healthcare for undocumented persons**, to improve access to medical care for these populations.

In 2025, the project “Access to Healthcare for All: In Switzerland Too!” continued its support for **seven medical care centres** by strengthening their supply of essential medicines.

Several Swiss pharmaceutical companies, including Andreabal, Sandoz, Streuli, and Zeller, contributed to securing the necessary medicines, ensuring that the centres’ supplies met local needs. **Thanks to these donations and financial contributions** from Loterie Romande, Sandoz, and Zambon, **the total amount allocated for the purchase of medicines reached CHF 12,000 in 2025.**

PSF Switzerland also participated in the annual meetings of the National platform, fostering exchanges on the current healthcare challenges faced by migrant populations in Switzerland.

This project illustrates **the lasting commitment of PSF Switzerland** to ensuring healthcare access for everyone, including the most vulnerable populations in the country.



Sabina Sommaruga, 2025. © PSF Switzerland

PSF SWITZERLAND IN ACTION

On display. In 2025, we launched our “solidarity” label, which embodies the humanitarian commitment and support of the pharmacists who display it on their shop windows. All pharmacies in Switzerland are invited to showcase their solidarity values in 2026.

In conversation. In April, our association was invited to the roundtable “Pharmacy... and What’s Next” on pharmacy professions, organized by the Association of Students in Pharmaceutical Sciences of Geneva. Anita Mattei, PSF Switzerland volunteer pharmacist in Tanzania, shared her experience.



On the move. In May, PSF Switzerland participated in Race for Gift. The CHF 8,004 raised was fully donated to our field projects. Pharmacie Populaire and Pharma24 mobilized their teams for the occasion.

In public. In September, our association took part in the Alternatiba Sustainability Festival - Village of Alternatives in Geneva. It was an excellent opportunity to engage with the public on the rational use of medicines.

On the bike. In November, in Bern, the “500 Kilometers by Bike” challenge organized by PSF Switzerland was one of the highlights of the Swiss Pharmacists’ Congress, resulting in a generous donation of CHF 1,000 from the event sponsor PharmaFocus.

THANK YOU

PSF Switzerland would like to thank all its generous donors, members, and funders who make it possible to help the projects' beneficiaries. The association would also like to thank the people who support the activities of PSF Switzerland. We would like to extend our special thanks to the OFAC Cooperative, our pharmacists on the ground, our members and our volunteers without whose support we could not exist.

PSF Switzerland members who support us!

Pharmacists on the ground in 2025: Chiara Asioli and Clara Martini (Madagascar) and Anita Mattei and Maria Gil Nogales (Tanzania)

2025 research project: Kokob Teweldemedhin (Madagascar) and Thierry Philbet (Tanzania)

Fifth-year pharmacy student, intern at the PSF Switzerland office: Naila Abad

Auditor: Anthony Huguenin, Chavaz SA in Carouge (GE)

Sponsors and financial partners: Alder Mireille, Alltherm Pharma Suisse SA, Anderegg-Wirth Elisabeth, Andreabal, André & Cyprien Foundation, Blarer Natalia, Bugnon Brigitte, Bustros Nabil, Chevallier Jean Marie, Commune d'Anières, Commune de Bardonnex, Commune de Bellevue, Commune de Bernex, Commune de Chêne-Bourg, Commune de Russin, Commune de Troinex, Commune de Vandoeuvres, Cordonnier + Rey SA, Coromandel Foundation, De Saussure Marina, Education&Health Foundation, Ernst Göhner Stiftung, Farmadomo Home Care Provider SA, Fidi SA, Fondation du domaine de Villette - France et Thierry Lombard, Gaia Marco et Ester, Galenica, Grognoz Véronique, Gartenmann Ruetz Christina, GSASA, Hersberger Kurt, Loterie Romande, Martinet Nicolas et Muriel, Mattei Indro, Novio Verwaltungs AG, OM Pharma, PharmaFocus, Pharmacie des Crêtes, Pharmacieplus du Marché Vevey, Pharmacie de l'Orangerie, Pharmacie MétroFlon SA, Pharmacie Populaire group, Pharmacie Von Roten, pharmaSuisse, Qualitheke and the reviewers of imail Offizin, Sandoz Family Philanthropic Foundation, Sandoz Pharmaceutical SA, SIG Patronage Fund, Stiftung Drittes Millenium, Streuli Pharma AG, Therme51 Leukerbad, TopPharm Apotheke, Tschan Martina, Ville de Genève, Ville de Lancy, Ville de Meyrin, Walter-Gamper Katharina, Zambon, Zeller, Zosso Dominique, as well as foundations and private individuals who wish to remain anonymous, who have supported PSF Switzerland via Twint or the "there-for-you" crowdfunding platform.

2025 « Solidarity Label » pharmacies: Pharmacie MétroOuchy SA, Pharmacie de Malagnou, Pharma24



Kokob Teweldemedhin, student, University of Geneva, Chiara Asioli and Clara Martini - PSF Switzerland pharmacists in Madagascar - Maria Gil Nogales, PSF Switzerland pharmacist in Tanzania, 2025. ©PSF Switzerland.

Operational partners: Candide Hospital (Madagascar), Congregation of the Franciscan Sisters of the Cross of Lebanon, Diocese of Antelias (Lebanon), Diocese E.L.C.T. Ulanga Kilombero (Tanzania), Franciscan Sisters Servants of Mary of Blois (Mahasoa, Madagascar), Geneva University Hospitals (HUG), Médecins Sans Frontières Switzerland, National platform for health care for undocumented migrants, Pharmelp, Sisters of Saint-Maurice (Aina Vao, Madagascar), Solidarmed, St Maroun Bouchrieh Dispensary (Lebanon), St Vincent de Paul Society (South Sudan), Swiss Association of Friends of Sister Emmanuelle, UNEPHAM Association –Mahajanga Pharmacy School (Madagascar), Unisanté (Lausanne), University of Antananarivo, University of Geneva.

Other partners: après (Social and Solidarity Economy Network), Association Reklam, Communautech and AL&JE (IT), Embassy of Switzerland in Tanzania, Fédération Vaudoise de Coopération, Growingpaper, GSASA, Les petits papiers d’Alex, Maison Internationale des Associations, Medicus Mundi Schweiz, NGO Travels, PAH (Humanitarian Pharmacists Association), Patrick Lehner (The PL Project), Pharmaceutical Sciences Students’ Association (AESP), pharmaJournal, Pharmapro, Société Vaudoise de Pharmacie, Swiss Association of Pharmacy Students (ASEP),

Volunteers: Krayenbühl Guy, Palumbo Costanza, Peruzzo Céline, Raemy Cécile, Soen SuYin, as well as the Committee members.

OUR MOTIVATIONS

“Our first duty is human solidarity.”
Susan Sontag

“Access to essential medicines is an integral part of the universal right to health.”

“Health care today is more of a privilege than a right for everyone. Millions of people die every year in poor countries from diseases that are curable or controllable in Switzerland, due to lack of access to care and medicines.”

“Almost one in three people in the world do not have access to Essential Medicines.”

“Inequity in diseases are intolerable.”

“There is a great shortage of qualified staff in poor countries.”

Sources : United Nations Secretary-General’s High-Level Panel on access to Medicines (2016), Ruth Dreifuss, co-leading the expert group. Unicef Kid information Madagascar (2014).



Pharmaciens Sans Frontières Suisse
Maison des Associations,
15 Rue des Savoises, 1205 Genève
IBAN: CH88 0900 0000 1201 0997 6



Writing:

Christelle Badino Brás,
Marie-José Barbalat, Elodie Barbay,
Thierry Philbet, Adrienne Ruffieux.

Graphism and printing:

Association Reklam, Sarah Duvillard,
Adrienne Ruffieux.

Cover photo: A mother and her twins with the
doctor from the Saint Vincent de Paul Health
Centre, Nyarjwa, South Sudan, ©ASASE, 2025.

Follow us:



www.psf.ch

